



Metropolitan Edison Company
Post Office Box 480
Middletown, Pennsylvania 17057
717 944-4041

Writer's Direct Dial Number

December 11, 1979
GQL 1522

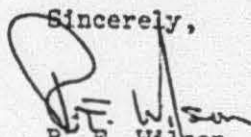
TMI Support
Attn: R. H. Vollmer
U. S. Nuclear Regulatory Commission
Washington, D.C. 20555

Dear Sir:

Three Mile Island Nuclear Station, Unit 2 (TMI-2)
License No. DPR-73
Docket No. 50-320
Organization Plan

Enclosed please find a draft copy of the Organization Plan as discussed with D. Brinkman on December 10, 1979. Attached also is the suggested change page to the proposed TMI-2 Recovery Technical Specifications.

Sincerely,



R. F. Wilson
Director, TMI-2

RFW:LWH:tas
Enclosures
cc: D. Brinkman
J. Collins

1609 070

Metropolitan Edison Company is a Member of the General Public Utilities System

7912180483

A001
5
1/1

ORGANIZATION PLAN

TMI-2

1609 071

7912180491

ORGANIZATION PLAN - TMI-2

1.0 Organization

The organization described in this plan indicates the functional areas required to support the recovery of TMI-2. Because of the changing priorities which exist during the Recovery Mode, changes will have to be made in a timely fashion.

1.1 TMI Generation Group Organization

The TMI Generation Group Organization is as shown in Figure 1.1 and provides management and technical support.

1.2 TMI-2 Organization

The TMI-2 Organization is as shown in Figure 1.2 and provides the necessary operation, maintenance, and management support.

2.0 Administration

2.1 Plan Approval and Audit

- 2.1.1 The TMI-2 Organization Plan and changes thereto shall be approved by the head of the TMI Generation Group.
- 2.1.2 The initial Organization Plan shall be submitted to the NRC for approval.
- 2.1.3 Changes to Organization Plan shall be submitted to the NRC within 45 days of the affected change.
- 2.1.4 The QA Department shall conduct annual audits to verify conformance of the organization with the Plan.

1609 072

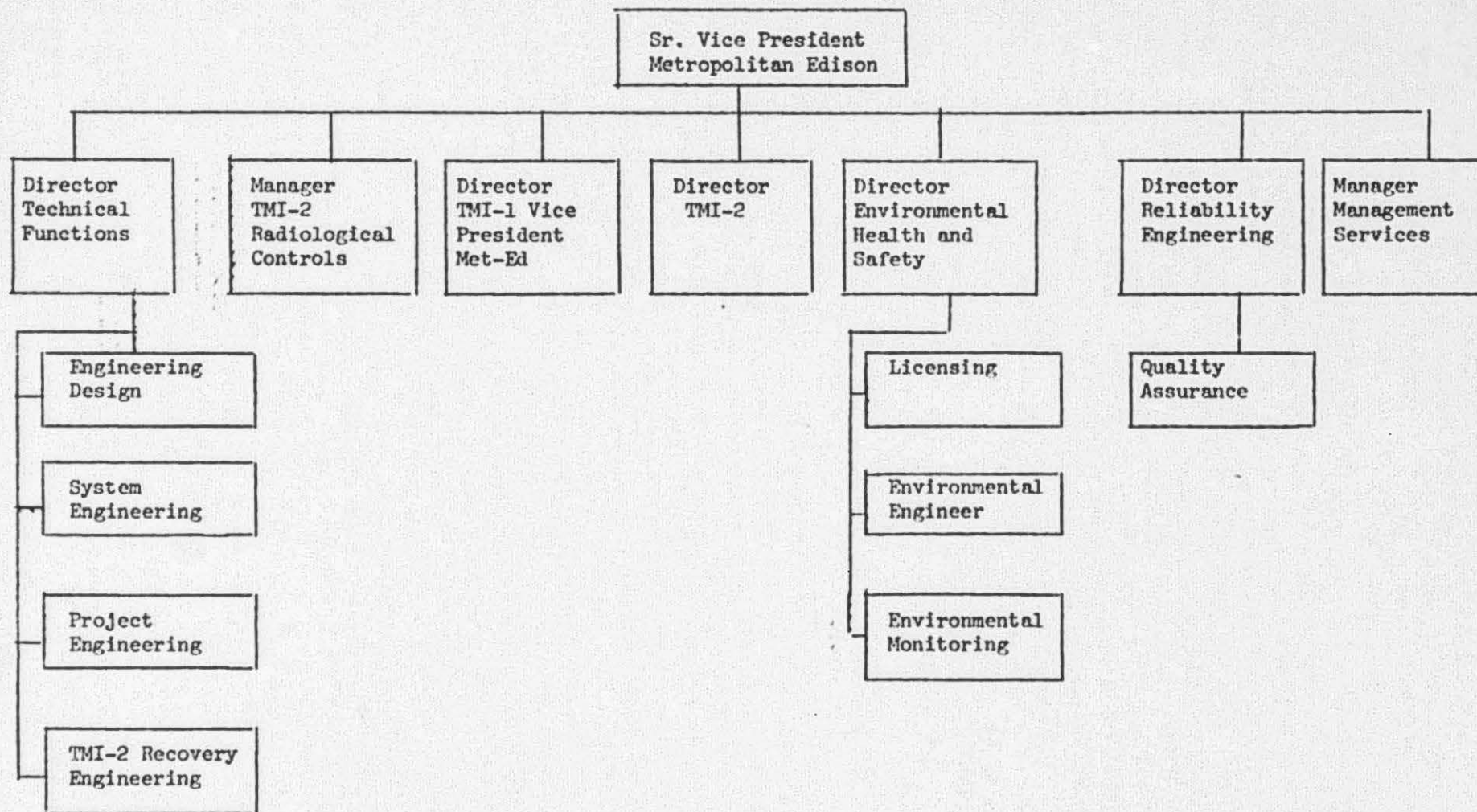


Figure 1.1 TMI GENERATION GROUP ORGANIZATION

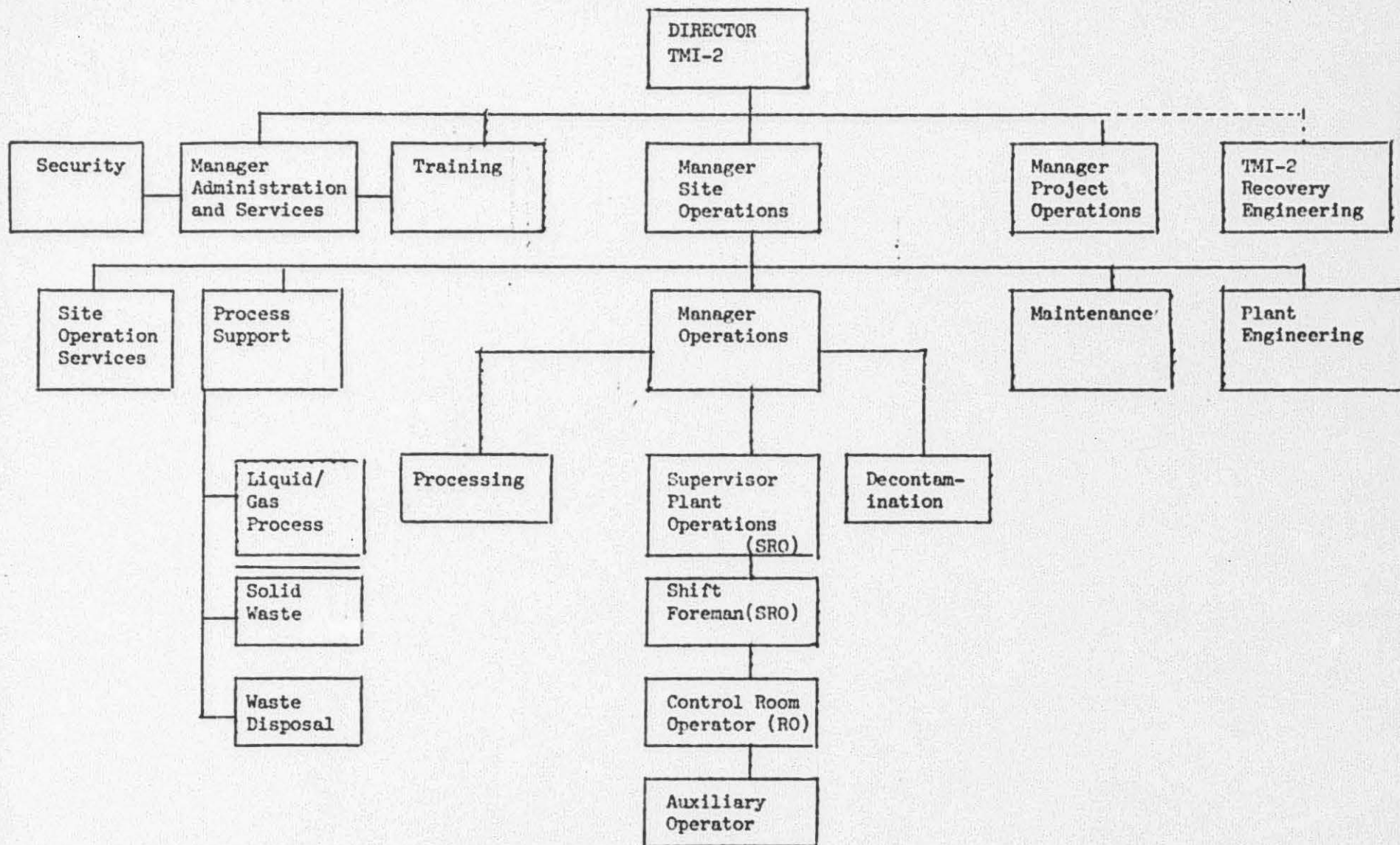


Figure 1.2 TMI-2 ORGANIZATION

6.0 ADMINISTRATIVE CONTROLS

6.1 RESPONSIBILITY

6.1.1 The Manager-Site Operations* shall be responsible for overall unit operation and shall delegate in writing the succession to this responsibility during his absence.

6.2 ORGANIZATION

TMI GENERATION GROUP ORGANIZATION

6.2.1 The TMI Generation Group Organization for unit management and technical support shall be as shown on Figure 1.1, of the Organization Plan.

TMI-2 ORGANIZATION

6.2.2 The unit organization shall be as shown on Figure 1.2 of the Organization Plan.

- a. Each on duty shift shall be composed of at least the minimum shift crew composition shown in Table 6.2-1.
- b. At least one licensed Operator shall be in the control room when fuel is in the reactor.
- c. An individual qualified in radiation protection procedures shall be on site when fuel is in the reactor.
- d. A Site Fire Brigade of at least 5 members shall be maintained onsite at all times. The Site Fire Brigade shall not include 3 members of the minimum shift crew necessary for safe shut-down of the unit and any personnel required for other essential functions during a fire emergency.
- e. An individual qualified in radiation protection procedures shall be on site whenever Radioactive Waste Management activities are in progress.

* This position is equivalent to the Unit Superintendent in procedures.